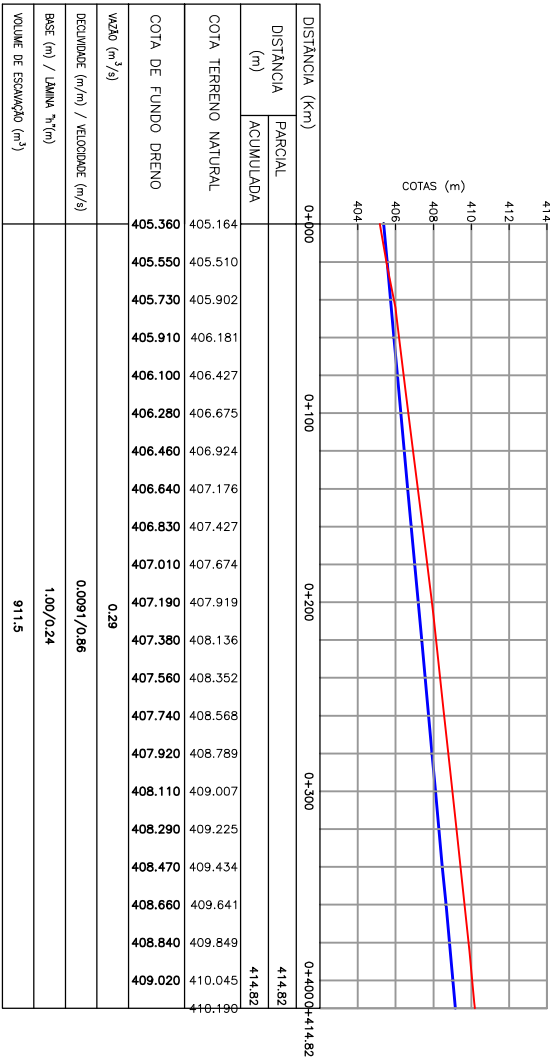
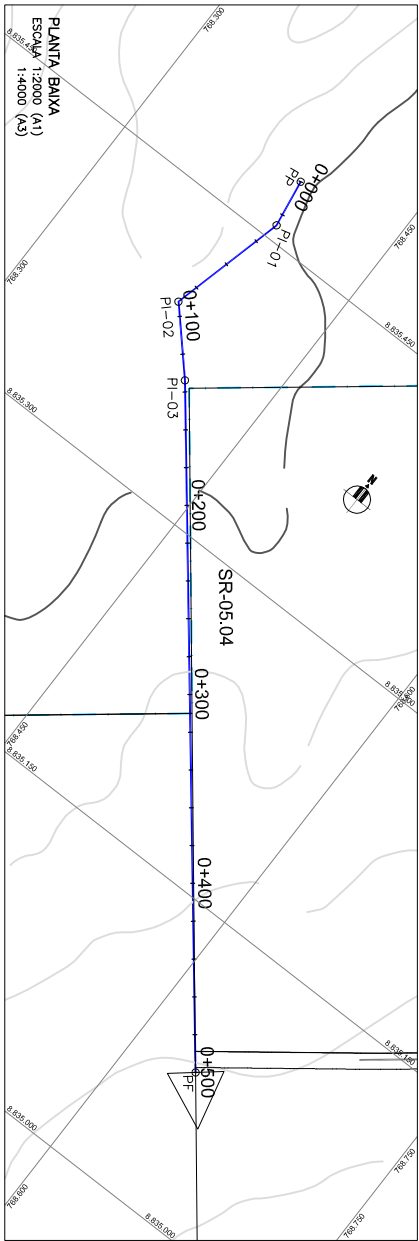
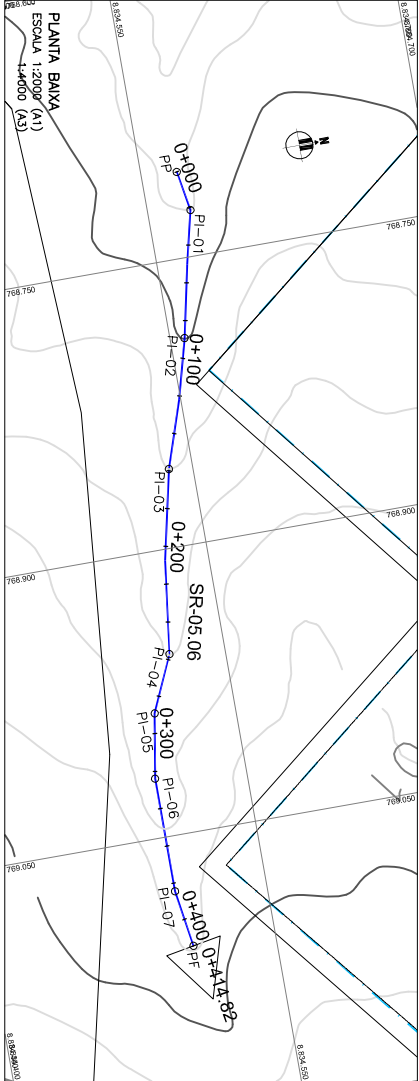
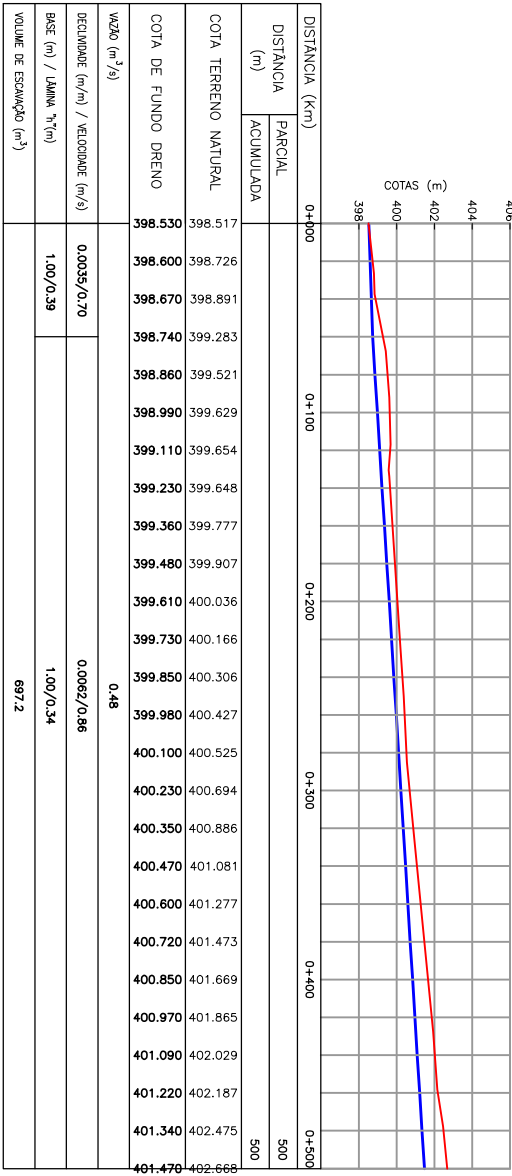


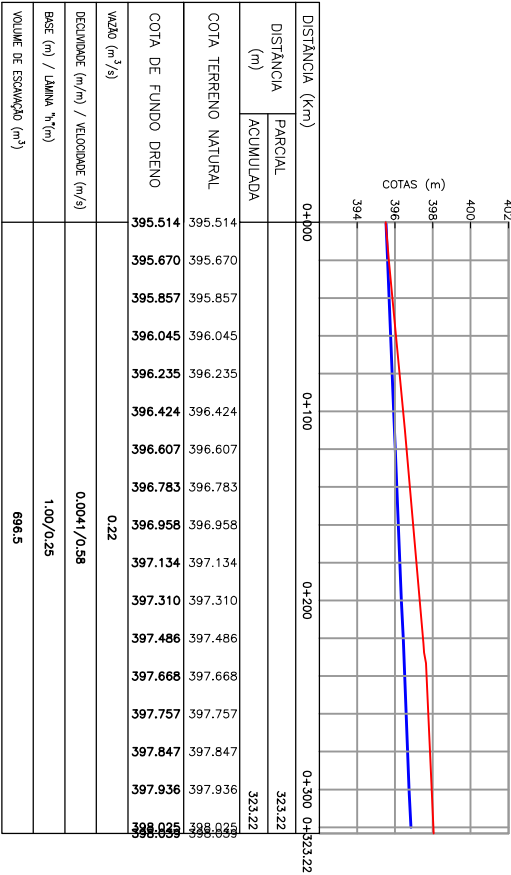
SR-05.06



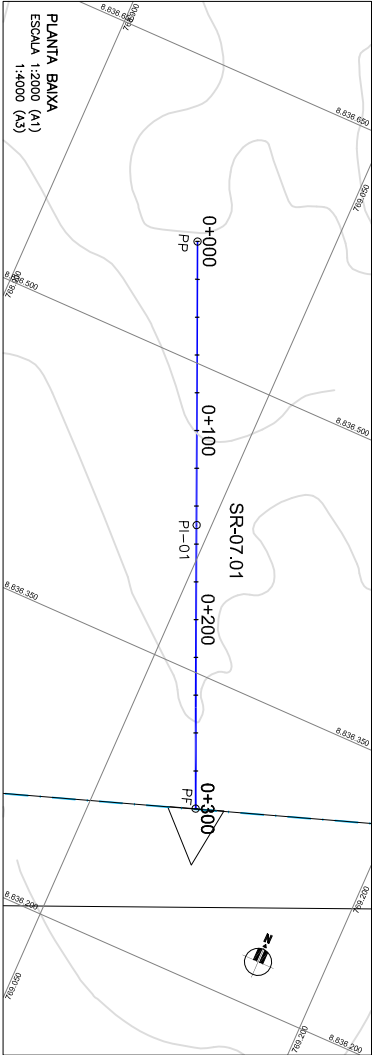
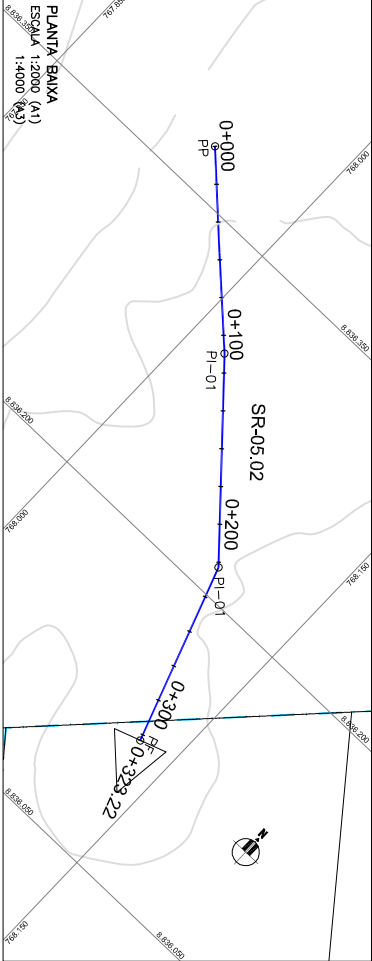
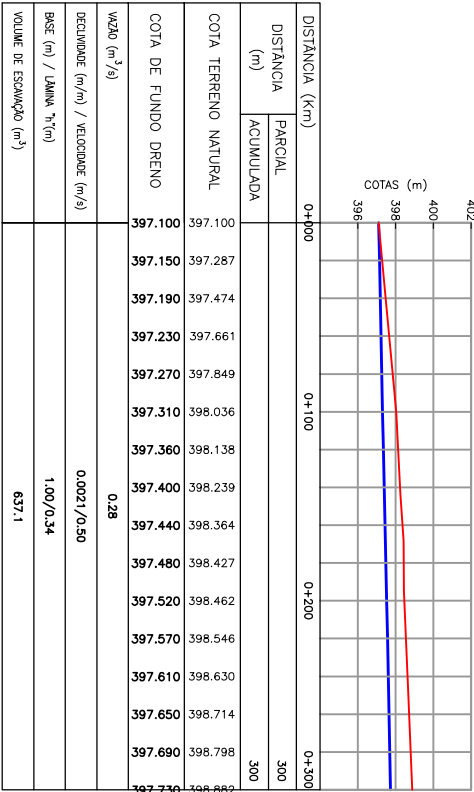
SR-05.04



SR-05.02



SR-07.01



NOTAS:

1. DISTÂNCIAS E ELEVÇÕES EM METRO, EXCETO INDICAÇÃO CONTRÁRIA.

DESENHO DE REFERÊNCIA:

1552-D-GER-DRE-01-00

CONVENÇÃO:

PERFIL NATURAL DO TERRENO

FUNDO DO DRENO

LIMITE DOS LOTES

LIMITE DO SETOR

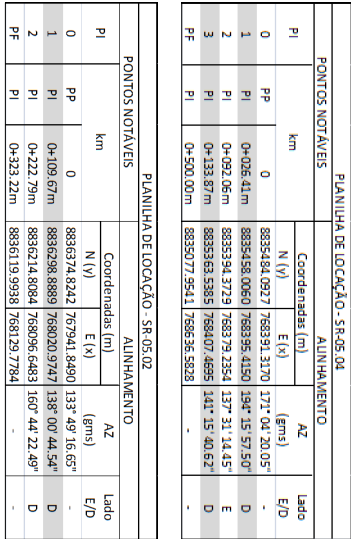
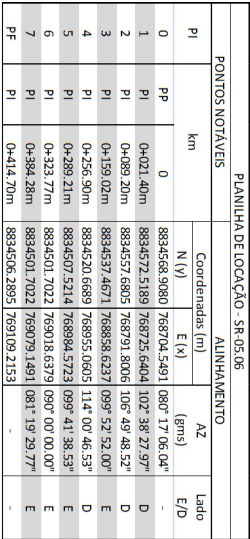
ADUTORIA

CURVAS DE NÍVEL

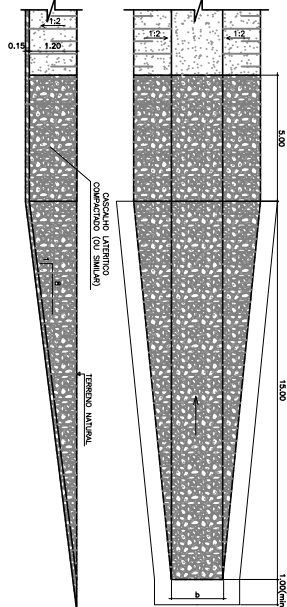
FUNDO DO DRENO ESCAVADO EXISTENTE

QUEBRA HIDRÁULICA

DETALHE 1 - TRANSIÇÃO NO FINAL DO DRENO



DETALHE 1 - TRANSIÇÃO NO FINAL DO DRENO



PONTOS NOTÁVEIS		COORDENADAS (m)		ALINHAMENTO		LADO	
PI	0	PP	0	0+100,00m	0+300,00m	156° 20' 59,56"	-
PI	1	PI	0+300,00m	8834524,1583	768942,7067	156° 20' 59,56"	D
PI	2	PI	0+300,00m	8834524,1583	768942,7067	156° 20' 59,56"	D

PONTOS NOTÁVEIS		COORDENADAS (m)		ALINHAMENTO		LADO	
PI	0	PP	0	0+100,00m	0+300,00m	156° 20' 59,56"	-
PI	1	PI	0+300,00m	8834524,1583	768942,7067	156° 20' 59,56"	D
PI	2	PI	0+300,00m	8834524,1583	768942,7067	156° 20' 59,56"	D

PONTOS NOTÁVEIS		COORDENADAS (m)		ALINHAMENTO		LADO	
PI	0	PP	0	0+100,00m	0+300,00m	156° 20' 59,56"	-
PI	1	PI	0+300,00m	8834524,1583	768942,7067	156° 20' 59,56"	D
PI	2	PI	0+300,00m	8834524,1583	768942,7067	156° 20' 59,56"	D

PONTOS NOTÁVEIS		COORDENADAS (m)		ALINHAMENTO		LADO	
PI	0	PP	0	0+100,00m	0+300,00m	156° 20' 59,56"	-
PI	1	PI	0+300,00m	8834524,1583	768942,7067	156° 20' 59,56"	D
PI	2	PI	0+300,00m	8834524,1583	768942,7067	156° 20' 59,56"	D

PONTOS NOTÁVEIS		COORDENADAS (m)		ALINHAMENTO		LADO	
PI	0	PP	0	0+100,00m	0+300,00m	156° 20' 59,56"	-
PI	1						