

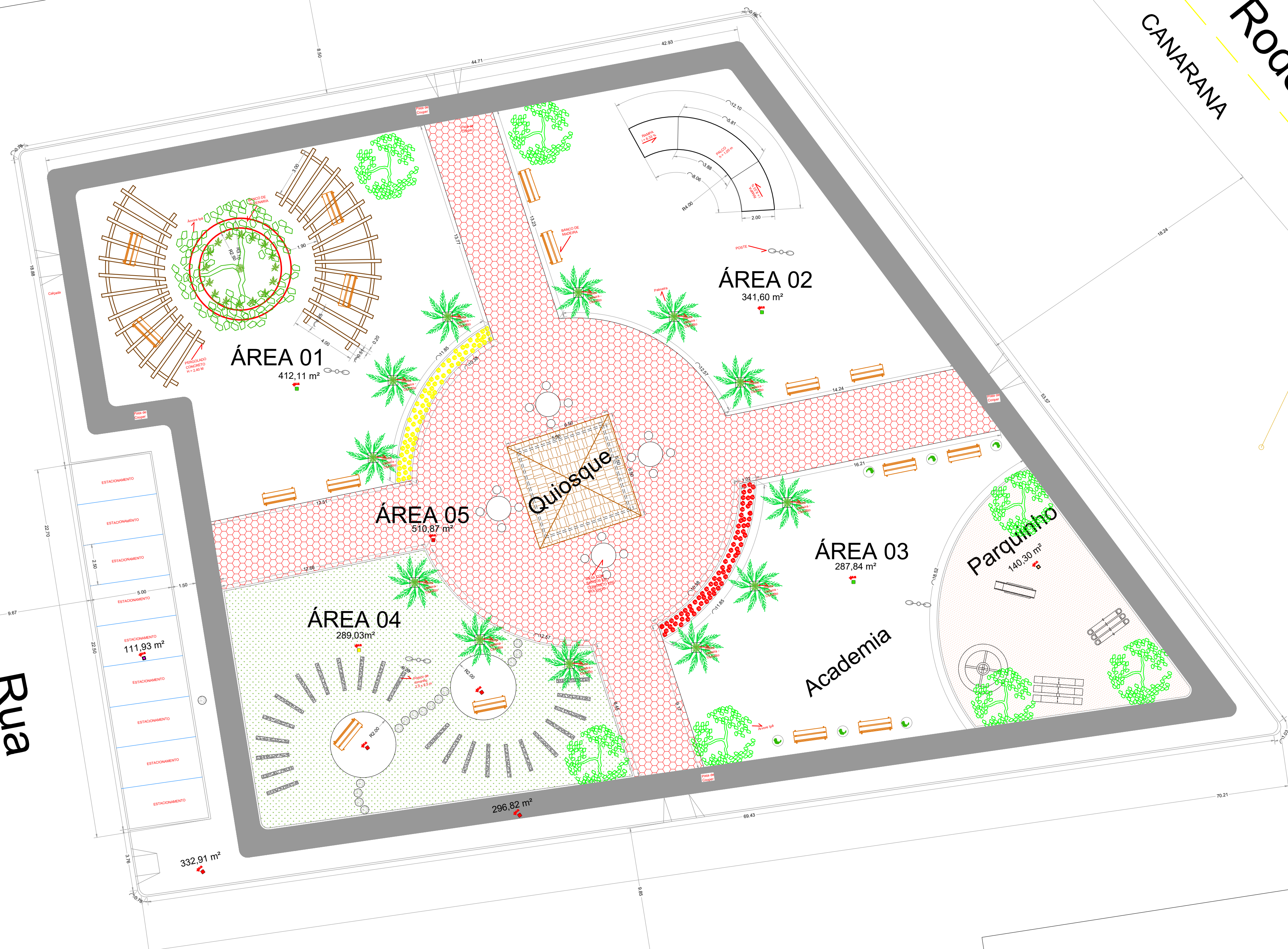
Rua








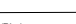
Rua

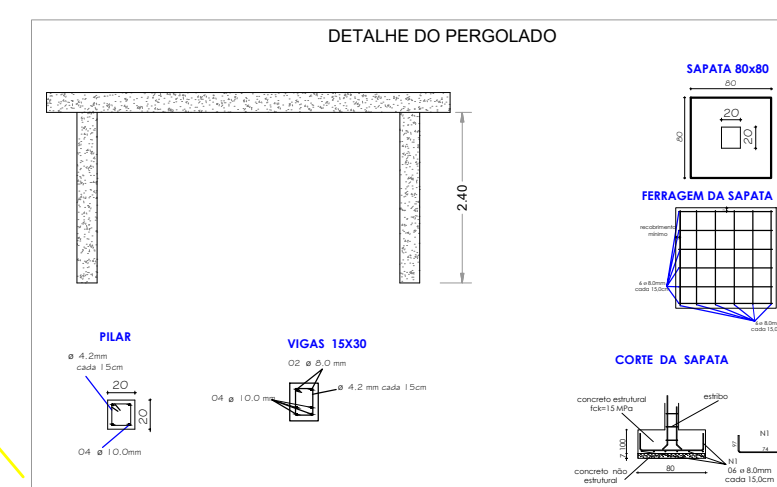
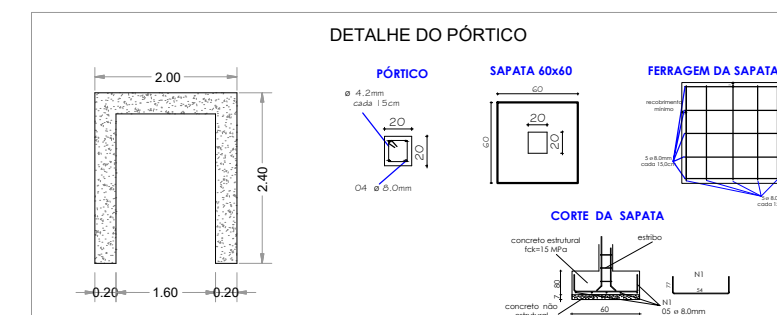
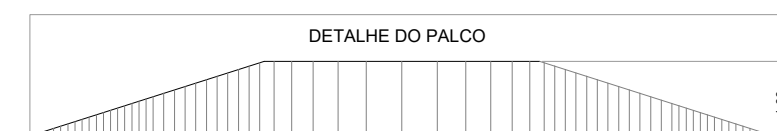
Rua

Rua

Rua



LEGENDA GERAL			
	BRASIL		<p>BRASIL, todos os Estados e Municípios do Estado do Rio de Janeiro</p>
	ESTADOS		<p>BRASIL, todos os Estados e Municípios do Estado do Rio de Janeiro</p>
	MUNICÍPIOS		<p>BRASIL, todos os Estados e Municípios do Estado do Rio de Janeiro</p>
	LEGENDA		<p>BRASIL, todos os Estados e Municípios do Estado do Rio de Janeiro</p>

[illegible]

COMPANHIA DE DESENVOLVIMENTO DOS VALES DO SÃO FRANCISCO E DO PARNAÍBA

CODEVASF **2ª SUPERINTENDÊNCIA REGIONAL**
BOM JESUS DA LAPA - BAHIA

CONSTRUÇÃO DE PRAÇA
POV. GAMELEIRA
BARRO ALTO - BAHIA

ELABORAÇÃO:	DESENHO:	ESCALA:	DATA:	FOLHA Nº
CODEVASF-2ª SR/GRD/UEP	PATRICIA CARDOSO DOURADO Arquiteta em Desenvolvimento Regional	1/ 150	JUL/2018	01/01